

Waterslide Decals

Use sharp scissors to cut around each marking just within the dotted gray line (or just outside the gray border of the window decals.)

R101 1:600 scale CA015 © CLASSIC AIRSHIPS

Rear Port
(left) side

R I O I

Rear Stbd.
(right) side

R I O I

H.M.A.R101 October 1930

H.M.A.R101 October 1930

G-FAAW R I O I

G

G-FAAW R I O I

G

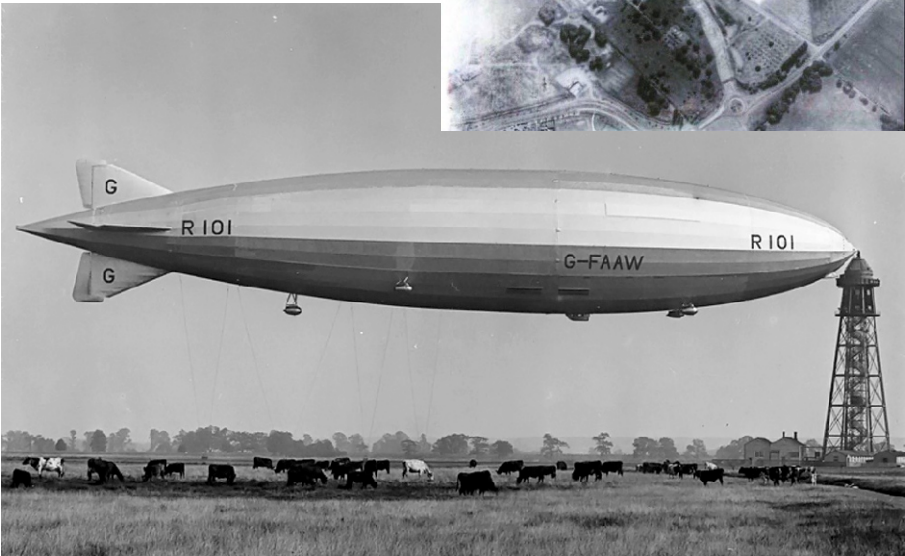
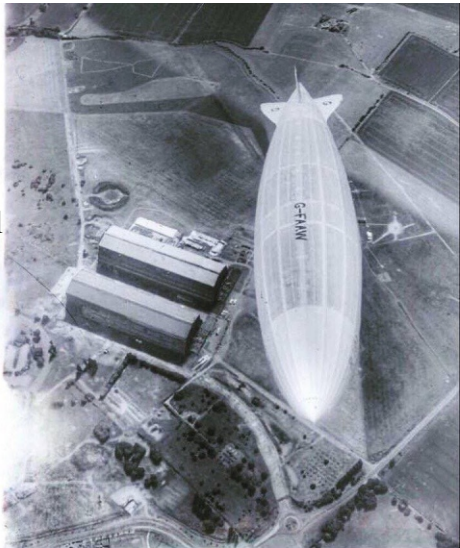
top of envelope

G

G-FAAW G G G G

1:600 scale decals shown; 1:700 scale are similar.

Note that the rear ‘R101’ markings are different according to the side where they are applied.
The country registration letter ‘G’ (United Kindom) on the horizontal tailplanes is positioned with the bottom of the ‘G’ toward the body of the airship.



Applying Waterslide Decals

The ultimate success of a model depends very much on how nicely its' decals are applied. The keys to this success are first to have just a few essential tools to hand and second, to be ready to be patient.

TOOLS REQUIRED:

Sharp scissors.

Shallow dish or saucer.

Soft artists' brush, around size 5.

Pointed tweezers.

Decal softener (such as Revell "DECAL Soft" or Tamiya "MARKFIT STRONG")

Soft cloth or paper towel.

PLUS, for models with a lot of surface detail or irregular finishes, a fine needle and a sharp straight blade scalpel or craft knife.

- Cut out the decals individually and only as they are needed.
- Part fill the dish with room temperature water and submerge the decal.
- Use the brush to wet the area where the decal is to be applied **with decal softener**.
- In just a few seconds the decal will start to lift from its' backing paper. Before it does, remove it from the water using the tweezers and offer it up to the model in position as close as possible to the one required.
- Hold the decal in position with the tip of a finger and gently pull the backing paper from underneath it using the tweezers.
- If there is still a lot of water around the decal 'wick ' some of it away with an edge of the paper towel.
- Using gentle strokes of the brush over its' surface, move the decal into it's final position - be patient, each stroke of the brush may move the decal only very slightly but movement will be there.
- Once in position carefully dab the decal with the paper towel to squeeze out any water still remaining beneath it. For larger decals use a squeegee action to smooth the decal from its' center outwards.
- If adhesion of the decal does not appear to be very good load the brush again with a little decal softener and paint it over the decal. Wait a few seconds and then dab it again with the towel and smooth the decal from the center out towards its edges.
- If the decal is covering small details or irregular surfaces, use the needle to pierce the decal film to release air from any hole; use the scalpel to cut small slits as necessary. Brush with a little softener and use the tissue to push the decal onto the surface.
- Do not be afraid to 'refloat' the decal on the model if you are unable to get it into position first time: load the brush with a little water and apply it around the edge of the decal. Tease the edge of the decal with the bristles of the brush and water will get under it again and 'lift' it off of the surface of the model; use the brush to push the decal into the correct position and then wick away the excess water with the paper towel, ready to start the fixing process again.